



2019-2020

INFORMATION PACKET

- ❖ Introductory Letter
- ❖ The Parent Cooperative
- ❖ A Brief History of the School
- ❖ The Teachers' Philosophy
- ❖ NAEYC Accreditation
- ❖ Typical Daily Schedule
- ❖ Tuition Schedule
- ❖ Registration Form

Established in 1970
173 Patchen Road, South Burlington, VT 05403
(802) 862-2772 administrator@tcsvt.org
www.tcsvt.org fax (802) 862-7011





Dear Parent,

Thank you for your interest in The Children's School. As a parent-teacher cooperative, we have provided a nurturing, creative and educational environment for hundreds of area preschoolers. Since 1970, our school has offered a caring place where a child can learn through play, develop good social skills and most importantly, build a positive self-image.

The Children's School is a parent cooperative in every sense of the word. Our educational program is defined and supported by our parents. We offer parents a unique opportunity to play an active role in the education of their children.

We are located at the corner of Arbor and Patchen Roads in South Burlington near Jaycee Park. Our facility is bright, spacious and designed specifically for preschoolers. We are ideally situated for parents living and working in the area.

This information packet will answer some of your more general questions about our school. It includes a brief description of the parents' role in the cooperative, the teachers' philosophy, a tuition schedule and a registration form. Please feel free to call and schedule an appointment for a visit at your convenience.

Thank you again for inquiring about our school. We look forward to hearing from you!

Sincerely,

The parents and staff of The Children's School

Established in 1970
173 Patchen Road South Burlington, VT 05403
(802) 862-2772 administrator@tcsvt.org www.tcsvt.org Fax (802) 862-7011



What is a Cooperative Preschool?

A cooperative preschool is a parent-owned, parent-run organization. In a coop, a family's involvement is multi-fold-- governing and financing the school, maintaining the facilities, providing a healthy snack supply throughout the year, and, on a volunteer basis, providing enrichment activities during class time. Each family helps to govern and finance the school by serving on a committee or the Board of Directors and actively participating in fundraising events such as the silent auction. Every family also helps maintain the facilities during the special community-wide "environment days" or by working on projects of their choosing and done on their own. Each family can choose which activities and tasks best meet their skills, interests and time constraints. This may consist of everything from planning parties and fundraising events to rewriting school policy or raking leaves in our spacious play yard. The organization is flexible in how its needs are met and we try to work creatively with families to help them fulfill their cooperative obligations. We feel that every family's contribution adds something special to our school, and supports our commitment to bringing quality learning in a diverse and creative setting to preschoolers.

Why Choose a Cooperative Preschool?

The direct parental efforts and involvement make the cooperative a unique educational opportunity for parents and children alike. Strong, lasting bonds are formed between cooperative families as they work alongside each other building a superb educational experience for their children. The opportunity to directly experience your child's expanding world as they learn to look beyond themselves cannot be matched outside the cooperative experience. As a parent, it is a delight and a privilege to be an integral part of a program, which encourages children to grow in mind, body and spirit. For the child, there is no better place to play, learn and grow than in a dedicated, involved community of parents and teachers who nurture each child with acceptance and kindness.



A Brief History of the School...

The Children's School opened its doors in the fall of 1970 in downtown Burlington. The creation of the school was the result of the studied work of parents and teachers associated with the Overlake Day School, a long established private school in Burlington. The school was based on the founding principles that children learn well in a non-competitive environment where they make many of their own choices and the school is as much for the parents as for the children. In 1993 the Children's School purchased its present property on Patchen Road. From the time you enter the bright, open classrooms and spacious playground with shade trees and a garden plot, you'll know that you have entered a world centered on the young child.

A PARENT COOPERATIVE

What it means to be involved....

Serve on the Board of Directors or a Board committee. We do our own hiring and marketing, building and grounds maintenance, fundraising to support scholarship and the general operating budget, grant writing and enrollment management. For those serving on the Board of Directors, board meetings are held once a month and committee meetings are held as needed for the tasks to be done. There is a wide variety of committees to serve on, and a great array of skills needed, which allows a great deal of choice when deciding how you would like most to contribute.

Actively participate in Fundraising. All families are expected to participate in our annual fundraising auction including selling admission tickets, donating items to auction (have a special talent or a friend with their own business?), and attending the function. It is the culminating social event for the school year and our community of present, past and future school parents. In addition, the school organizes a few smaller fundraising events that all families are asked to participate in. Fundraising proceeds help provide scholarship funds for our school families, as well as support special projects, programs and school operations.

Participate in Environment Days. Families are expected to participate in the cleaning, painting, planting, sewing and other maintenance projects for the school. Special days are set aside for the entire TCS community to gather and work on these projects together; before school starts in August, October, before the open house in January, and in May. Can't make it? There are also other tasks to be done that can be completed anytime during the school year, as your schedule permits.

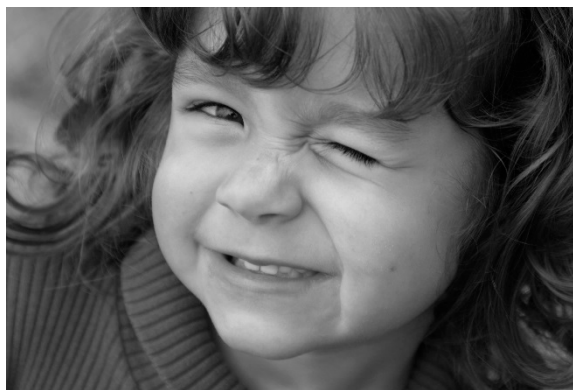
Attend Corporation Meetings. Twice per year (September and May) parents meet for an evening to discuss the current business of The Children's School.

Provide Snack and Enrichment Activities. Several times a year, families are asked to provide a week's supply of snack for the children in the program. This occurs on a rotating basis. Families are also encouraged to volunteer in the classroom where they have the opportunity to share skills, special talents, and enrichment activities that extend/support current curriculum. Examples/ideas include, but are not limited to: cooking/baking, playing musical instruments, yoga practice, science experiments, wood working, etc. Parents are asked to coordinate these planned visits with teachers ahead of time.

The Teachers' Philosophy

As teachers, we hope to create a preschool classroom based on play, nurturing care and respect for all children and all people. In this atmosphere, children are supported in their endeavors to pose questions, seek solutions, develop friendships and explore their creative abilities. The classroom provides a variety of opportunities for children to expand on their current knowledge through painting, drawing, writing, playing, listening to music, working with sand, building with blocks, reading and listening to stories, experiencing math and science, and recreating life experiences through dramatic play. Our classroom is designed to encourage participation, not only in self-directed small group activities (through the use of learning centers), but also through teacher-directed large group experiences, such as meeting time, music and circle games.

We plan age-appropriate activities that facilitate children's learning through self-directed exploration. Our program is centered on the belief that children are capable of making appropriate choices and decisions based upon their own interests. The freedom to make competent choices each day empowers children to believe in their abilities to learn and thrive in the classroom. As teachers, we design activities and choose materials that promote open-ended experiences and provide the child with continuing challenges through repeated interactions. Nurturing a child's curiosity is of primary importance in the early years and by supporting and building upon this curiosity we can provide the groundwork for the child to continue on as an enthusiastic learner.



NAEYC Accreditation and STARS

The Children's School is nationally accredited by the National Association for the Education of Young Children. NAEYC administers the largest and most widely recognized accreditation system for early childhood schools. Early childhood programs accredited by NAEYC have voluntarily undergone a comprehensive process of internal self-study and external professional review to verify compliance with the Criteria for High-Quality Early Childhood Programs. NAEYC's accreditation assures that The Children's School provides a safe and nurturing environment while promoting the physical, social, emotional, and intellectual development of young children. The Children's School has also received a Five Star Rating through the Vermont STARS program (Step Ahead Recognition System). Stars recognizes the accomplishments of registered and licensed programs for achievements above and beyond what is required by state regulations for licensed and registered child care programs.



TYPICAL DAILY SCHEDULE

7:45 – 8:00	Early Drop-off
8:00 – 8:30	Drop-off, Outdoor Play/Early Morning Activities
9:15	Morning Meeting
9:45	Snack
10:00	Story
10:15	Free Choice Play and Activities
11:15	Outdoor Play
11:45	Pick Up from Morning Program
11:50	Story & Lunch
1:00	Transition to Rest and Quiet Reading
1:15	Rest
3:30	Snack, Free Choice and Activities
4:20	Story
4:30	Outdoor Play
5:30	Pick-up from Full Day Program



The Children's School
Tuition Schedule
2019-2020

Morning Program 8:00am – 11:45am	Yearly Tuition	Full-day Program 8:00am – 5:30pm	Yearly Tuition
		2 days (T/Th)	\$5,320
3 mornings (M/W/F)	\$5,555	3 days (M/W/F)	\$7,895
5 mornings (M-F)	\$7,635	5 days (M-F)	\$13,095
Tuesday/Thursday (7:45am-12:45pm)		\$3,356 (max. 4 children)	

Early Morning Drop-off (7:45am-8:00am) (must opt in for full year/not applicable to T/TH morning program):

- 2 mornings: \$180/year, \$20/mo.
- 3 mornings: \$225/year, \$25/mo.
- 5 mornings: \$315/year, \$35/mo.

Note: Class size is limited to a maximum of 17 children per day. When possible, flexible scheduling of days is available to meet families' needs.

Tuition includes a \$120 payment toward spring fundraiser tickets.

A \$150 non-refundable registration fee (\$85 for returning families) is due with each application for enrollment. A \$100 deposit is due when contracts are sent out in the spring. The remaining balance will be charged in monthly installments from September-May.

Publicly-funded prekindergarten (ADM)

Under Act 166, school districts must provide funding for children attending a qualified preschool for 10 hours/week for 35 weeks of preschool. As a high-quality prekindergarten education program, The Children's School is able to partner with school districts that offer tuition funding. Funding for the 2019-20 school year is set at \$3,356. These funds are paid directly to The Children's School by the school district, and are applied toward your child's tuition. Please note that funding is contingent upon families providing their school district with a completed registration, providing all requested documentation, and complying with each district's requirements for continued funding (i.e. children must attend preschool at least 10 hours/week). If a school district discontinues a child's funding, for any reason, families are required to pay the tuition due and owing The Children's School. More information regarding eligibility can be obtained by contacting your school district.

While the majority of our families reside in participating districts, The Children's School has also chosen to provide a discount to families not receiving funding. Families residing in non-participating districts receive 20% off of morning program tuition, or 10% off of full-day tuition.

Scholarship

The Children's School recognizes that tuition costs can present a financial strain. A limited number of partial scholarships are available to assist families in need. The Children's School offers two types of scholarships: a general needs scholarship and an emergency scholarship. Scholarship funds are not strictly for tuition; funds may be requested for activity fees or extra services throughout the year. Scholarships are based on need and The Children's School uses state income guidelines in determining eligibility.

Sibling Discount

The Children's School offers a 10% family discount on the tuition of your second child if both children are attending during the same school year.

2019-2020 Registration Form



Child's Full Name _____ Sex: M ___ F ___
(first) (middle) (last)

Name by which child likes to be called: _____ (OPTIONAL) Race: _____

Date of Birth _____ Age as of Sept. 1, 2019: ___ Yrs. ___ Mos.

Parent _____ Parent _____

Address _____ Address _____

Email _____ Email _____

Home Phone _____ Home Phone _____

Work Phone _____ Work Phone _____

Cell Phone _____ Cell Phone _____

Occupation _____ Occupation _____

Place of Work _____ Place of Work _____

Languages spoken at home: _____

How did you hear about us? _____

Please select your choices for enrollment below. You may choose a five-day program (M-F), a three-day program (MWF), or a two-day program (T/TH). You may choose Morning or Full Day within these programs.

MORNING PROGRAM in which you are enrolling your child:

8:00 - 11:45 Monday/Wednesday/Friday

8:00 - 11:45 Monday-Friday

7:45 - 12:45 Tuesday/Thursday

FULL DAY PROGRAM in which you are enrolling your child:

8:00 - 5:30 Monday Tuesday Wednesday
 Thursday Friday

EARLY MORNING DROP-OFF OPTIONS (must opt in for full school year)

- 2 mornings (not applicable to T/TH morning program)
- 3 mornings
- 5 mornings

Please list the names and ages of siblings:

_____ (Please put an * by the child's name if they also attended The Children's School)

Please list your child's previous childcare and/or preschool experience:

Location/School _____ Date(s) Attended _____

What features about The Children's School have prompted you to apply for our program?
(Teachers, facility, philosophy, friend's recommendation, etc.)

Please describe specific aspects of previous preschool/childcare experiences that you liked or disliked:

Please feel free to offer any comments or information about your child that you feel the teachers would find helpful. (i.e. play habits, likes, fears, interests, dislikes, etc.)

Please indicate the benefits that you expect your child to derive from The Children's School in the coming year.

Please return this form with your **NON REFUNDABLE** Registration Fee to:

The Children's School
173 Patchen Road
So. Burlington, VT 05403

Registration Fee: **\$85.00** Returning families
\$150.00 New Families

Signed _____ Date _____